

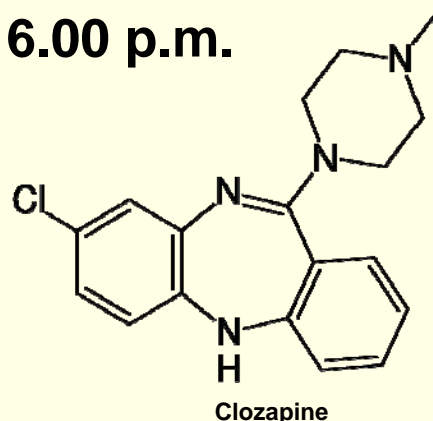
# Progress in Psychopharmacology in Munich

## Scientific development and practical use of psychotropic substances in the University Hospital - From E. Kraepelin to the 21<sup>th</sup> century



The University Department of Psychiatry  
 Nußbaumstraße 7  
 Munich  
 13. – 17. July 2008  
 open 10.00 a.m. – 6.00 p.m.

by  
 Norbert Müller  
 Markus Opgen-Rhein  
 Hanns Hippus



Some pioneers in psychopharmacology and related fields worked at the Department of Psychiatry of the Ludwig-Maximilians-University in Munich. Researcher as Emil Kraepelin very early and since 1904 several members of the staff of the hospital were involved in the development and implementation of psychopharmacological therapy both, scientifically and in clinical use.

Already 1892 published Emil Kraepelin experimental studies “On the influence of basic psychic processes by some drugs”; he also studied the effects of urethan, tea, coffee, or alcohol on psychic functions.

When the Bayer company introduced chlorpromazine (**Megaphen**) 1953 in Germany, the Munich department had contributed to the clinical studies with 61 patients – the exhibition documents the course of the Megaphen-treatment exemplarily in some patients, the treatment regimen in those times called “**artificial hibernation**” (künstlicher Winterschlaf).

R. Kuhns discovery of the antidepressant effect of imipramine (**Tofranil**) followed 1957. Exemplary courses of the **imipramine-cure** (Tofranil-Kur) using high doses of injections in depressed patients are shown.

In the early 1960ies, the benzodiazepines as diazepam (**Valium**) were developed by Leo Steinbach in Switzerland and introduced in Germany too.

Following the recommendation of M. Schou **Lithium** was in use in the hospital since the 1960ies.

Indications and practical use of benzodiazepines and Lithium are shown from patients from our hospital.

The first - and until today gold-standard atypical antipsychotic clozapine (**Leponex**) was developed in the late 1960ies until the early 1970ies. Hanns Hippus and his working group studied mechanisms and functions of clozapine – and they prescribed it continuously in schizophrenic patients. Exemplary clinical indications and courses of patients will be demonstrated in the exhibition.